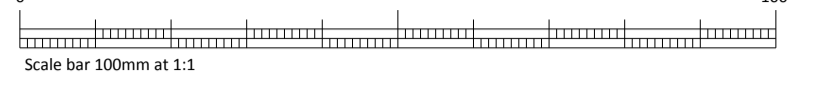




This drawing to be read in accordance with the specification/Bills of Quantities and related drawings.

No Dimensions to be scaled from this drawing. All stated dimensions to be verified on site and the Architect notified of any discrepancies.



Reproduced from OS Mastermap by permission of Ordnance Survey on behalf of the Controller of Her Majesty's Stationary Office. © Crown Copyright 2012. All rights reserved. Reference number 1021522

NOTES

- Existing levels have been taken from Ordnance Survey and Topographical Information provided by others.
- Currently proposed levels are as provided by Civil Engineer and subject to change following any detailed site levels investigation.
- Highways arrangement is shown indicatively only; refer to Highway Engineer's drawings for detailed highways proposal. Proposed works are subject to agreement with Local Highways Authority.
- Landscaping is shown indicatively only; refer to Landscape Architect's drawings for detailed landscape proposals.
- Store footprint and internal arrangement subject to retail planning approval.

LEGEND



ACCOMMODATION SCHEDULE

sqm APPROX. OF EXTERNAL AMENITY SPACE AT THIRD FLOOR LEVEL
27 sqm APPROX. OF COMMUNAL SPACE

THIRD FLOOR		
FLAT 22-	2 BEDROOM	(74.6sqm)
FLAT 23-	1 BEDROOM	(50.8sqm)
FLAT 24-	1 BEDROOM	(51.3sqm)
FLAT 25-	1 BEDROOM	(50.9sqm)
FLAT 26-	1 BEDROOM	(50.9sqm)
FLAT 27-	1 BEDROOM	(50.4sqm)
FLAT 28-	1 BEDROOM	(54.9sqm)
FLAT 29-	2 BEDROOM	(68sqm)
FLAT 30-	2 BEDROOM	(69.6sqm)
FLAT 31-	2 BEDROOM	(74.4sqm)

TOTAL: 31 FLATS OVER 3 FLOORS

FOR PLANNING

REV.	DATE	NOTE	BY	IN
C	16.03.17	AMENDMENTS FOLLOWING CLIENTS & PLANNING COMMENTS	SM	
B	17.02.17	AMENDMENTS FOLLOWING CLIENTS & PLANNING COMMENTS	BV	
A	14.02.17	AMENDMENTS FOLLOWING CLIENTS COMMENTS	BV	

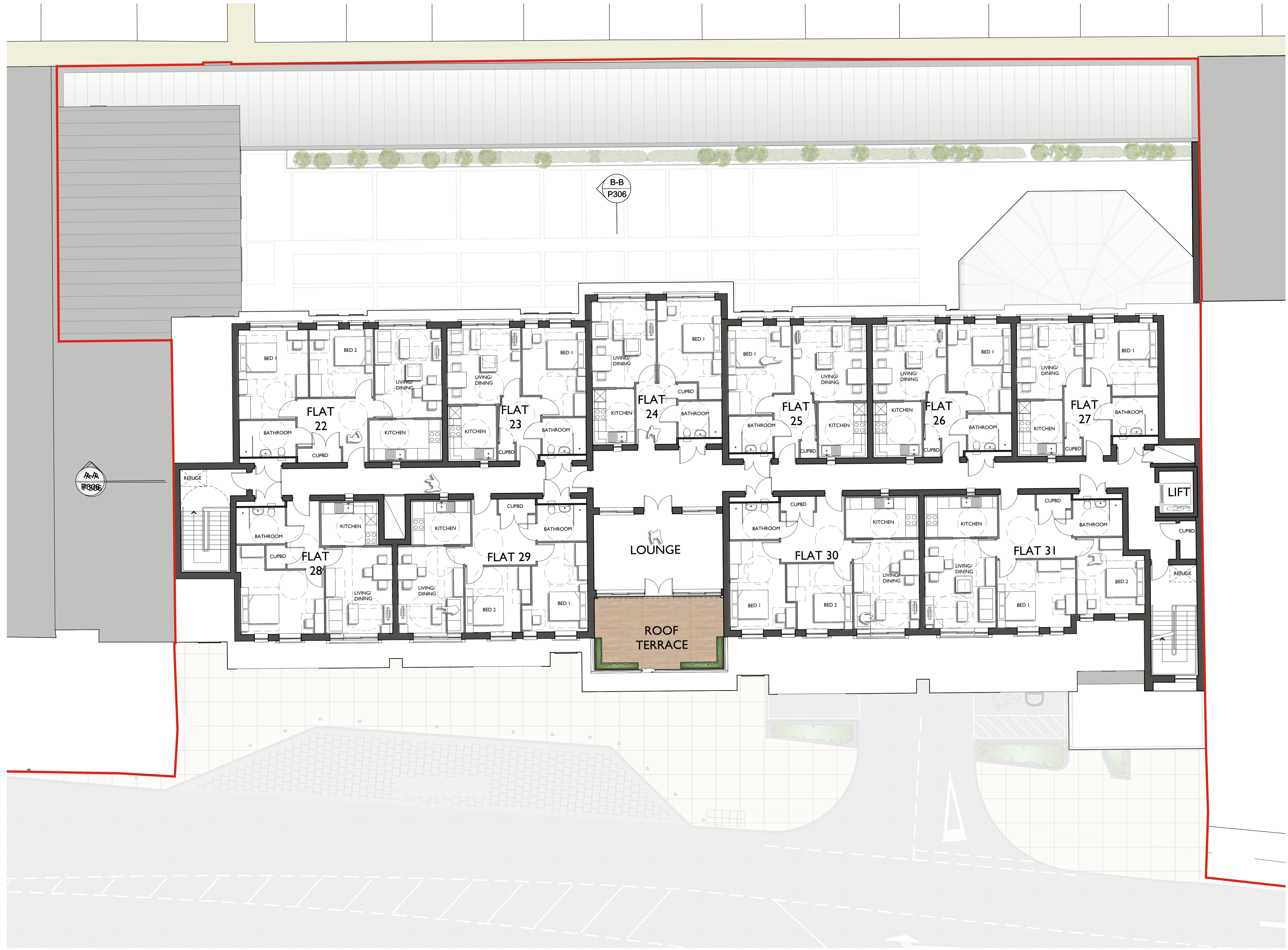
Project
PROPOSED MIXED USE DEVELOPMENT WESTCLIFF-ON-SEA

Title
PROPOSED THIRD FLOOR PLAN

Scale
1:100 @A1
Date
JAN 2017
Drawn
BV
Checked
RC

Drawing Number
6766/P301.3
Revision
C

Saunders
Architecture+Urban Design



PROPOSED LAYOUT LEVEL 3